



UDDERLY EZ MILKER™

US Patent No. 4,856,448 *Other Patents Pending

Thank you for purchasing the UDDERLY EZ MILKER™, the safest and most effective large domestic and exotic animal milk and colostrum collection device available. It can be used on horses, ponies, sheep, goats, llamas, alpacas, zebras, camels and miniature cows. Udderly EZ is also the most efficient hand operated milking product on the market today. This patented vacuum pump is manufactured only with highest quality engineered plastics and is assembled under the strict quality control standards for medical devices.

The Udderly EZ milk and colostrum extraction cylinders come in two sizes: a #1 Small to accommodate small or maiden mares, llamas, sheep, goat, cattle, etc.; and a #2 Large for older or large breed mares, cattle, etc. The top of the collection cylinder has been specially designed to fit the unique shape of an animal's udder and has a rolled surface to prevent harm to the udder. This unit has been designed and tested over a five year period with input and endorsements from many leading equine veterinarians and breeding farm professionals. The UDDERLY EZ MILKER™ will give you superior performance and reliability in the extraction of milk and colostrum for:

- feeding a newborn
- collecting milk or colostrum from a newborn's mother or nurse animal for immediate use
- collecting milk or colostrum from a newborn's mother or nurse animal for storage in a milk/colostrum bank

All of the above can be accomplished with a minimum of effort and a great degree of safety. Please follow these easy steps in the assembly and operating procedures of the UDDERLY EZ MILKER™.

EZ ASSEMBLY

1. Align the tapered end of the bottle connector with the insertion hole on the pump and connect the two; the pieces will lock together.
2. Screw the clear plastic bottle with the rubber O ring onto the cylinder; this must be a snug fit to prevent any air leakage.
3. Grasp the pump and slide the bottle connector clips between the guide ridges on the collection cylinder; the pieces will lock together.
4. As a precaution, gently squeeze the cylinder and pump together to insure a solid seat of the two units.
5. Place the mouth of the extractor against the heel of your hand and pump to make sure pump is creating necessary vacuum. If vacuum is not created, repeat Steps 2 and 4, above.



To release vacuum, see #7

THE MILK OR COLOSTRUM EXTRACTION PROCESS

1. Always clean the udder area, using the Udderly EZ Wipes provided in your kit, to remove any accumulated dirt and bacteria.
2. Gently Remove the wax plug from the end of the teat so it does not drop into the bottle.
3. Manually Strip each teat at least twice to get a good flow of milk started.
4. Place the cylinder directly over the teat and gently lift the pump unit against the udder.
5. Squeeze the handle at least 2-3 times, this will start the vacuum seal process, locking the unit onto the mother's udder. (You may want to hold bottle with free hand until sealed).
6. As soon as the milk flow starts, stop pumping! When the flow slows or stops, start pumping again. You may need to repeat this sequence 3-4 times. When the flow stops, or you have collected an appropriate amount of liquid, stop and go to the next teat.
7. To release the vacuum on the pump, push bottle backwards toward hand trigger to release vacuum lock. Do not pull pump off udder.
8. The first milking will generally collect between 8-12 ounces, although this may vary with each animal species or breed.
9. If the mother does not let her milk down immediately, you may have to massage her udder gently to get the flow started.
10. Do not overfill the collection bottle, only fill to the indicated Line on the bottle. Never tilt pump backwards. This will allow the milk or colostrum to run into the air intake hole and damage the diaphragm in the pump.
11. Pour the collected milk or colostrum into a 10 – 16 oz. plastic soda bottle and attach the nipple supplied in the kit to bottle feed the baby; or, pour the collected milk or colostrum into the extra collection bottle and apply the white cap with seal top for freezing. Be sure to label with mother's name and date collected, or other storage information as you may find appropriate.

PHOTOGRAPH BY DOUG PRATHER



EZ CLEANING

The pump portion of the milker readily snaps on and off, making the unit very easy to clean. After each use the collection cylinder and plastic jar should be immersed in warm water to which a small amount of bleach (not more than 1 part bleach to 10 parts water) has been added for disinfectant. RINSE THOROUGHLY and then allow to dry. Do not _____ immerse the pump in water, wipe off only. Udderly EZ wipes are perfect for cleaning the pump also!

THAWING FROZEN COLOSTRUM

Never use a microwave oven to thaw out frozen colostrum as it will destroy the antibodies. Place the colostrum bottle in a basin of warm water and allow to thaw slowly.

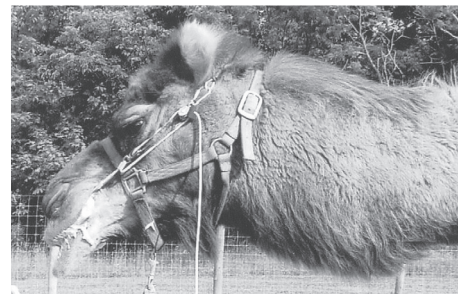
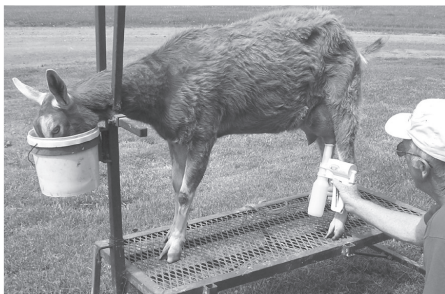
UNRULY OR HIGHLY AGITATED ANIMALS (horses, ponies, llamas, donkeys, etc.)

If an animal to be milked appears to become agitated or uncooperative with her handler during the extraction procedure or refuses to let her baby nurse, we recommend the use of The Stableizer Restraint and Training System[®], originally developed for horses. This restraint system allows the animal to calm down humanely, providing a safer environment for both handler and baby. The calming effect will also aid the mother in letting her milk down. The Stableizer[®] is available through EZ Animal Products.



PHOTOGRAPH BY DOUG PRATHER

Remember: the UDDERLY EZ MILKER™ is great for horses, ponies, sheep, goats, miniature cows, llamas, alpacas, camels and certain exotic animals such as zebras, etc. (ask about special size needs for some animals)



For more information or to order any of our products directly, contact:

Big Rock Media Inc.	rogers@stallionguide.ca
Box 98	T: (403) 938-5436
Okotoks, Alberta	F: (403) 938-5441
T1S 1A4	www.stallionguide.ca

If you have any questions about this product or if you are ever in doubt about its suitability for your purpose, CONSULT YOUR VETERINARIAN. The following is made in lieu of all warranties, expressed or implied:

Seller's and manufacturer's only obligation shall be to replace such quantity of the product proved to be defective. Neither seller nor manufacturer shall be liable to the user or any other person under legal theory, including, but in no way limited to, negligence or strict liability, for any direct or consequential damages sustained or incurred by reason of the use of the product or otherwise. Before using, user shall determine the suitability of the product for the intend use, and user assumes all risk and liability whatsoever in connection therewith. The foregoing may not altered except by officers of seller and manufacturer.